



Copydot:
 Optical scanning resolution: 2,540 dpi
 Output screen ruling: 175 lpi
 (copy of original film screen)

Creo Customer Services: helping you profit from your Creo solution

Whatever the extent or complexity of your needs, our experts in support, technical education and service can help you plan, install, manage and grow your prepress system. We have installed over 12,000 professional scanners, and more than 2,500 CTP and 9,000 CTF systems, each one uniquely developed for specific production requirements.

Expert service means faster deployment
 Our service teams will get you up and running sooner, with a solution that's designed with your business and operational needs in mind.

Professional training for greater productivity
 Our prepress training programs are among the most comprehensive in the industry.

Uptime support maintains production levels
 Our comprehensive, personalized support plans can help maintain optimum performance and productivity to meet your uptime needs. We focus on failure prevention, software and firmware enhancements and technical assistance, whenever and wherever you need it.

Let's Talk

Contact your Creo representative to see how professional scanning and workflow capabilities of EverSmart and IQSmart scanners can deliver the image quality and production speed that your business requires.

www.creo.com/scanners

About Creo
 Creo (NASDAQ:CREO; TSE:CRE) is the world's largest independent supplier of prepress systems, with sales and support offices across the globe. Creo produces digital photography equipment; professional color and copydot scanning systems; variable information workflow systems; inkjet and halftone digital proofers; computer-to-film and computer-to-

plate devices; color servers for print-on-demand digital printers, and a comprehensive range of workflow, business management, networking, variable information, and creative software products. Creo is also an OEM supplier of on-press imaging technology and components for digital presses.

© 2002 Creo Inc. The products mentioned in this document are trademarks or service marks of Creo Inc. and may be registered in certain jurisdictions. Other company and brand, product and service names are for identification purposes only and may be trademarks or registered trademarks of their respective holders. Data subject to change without notice.

Produced using Creo technology

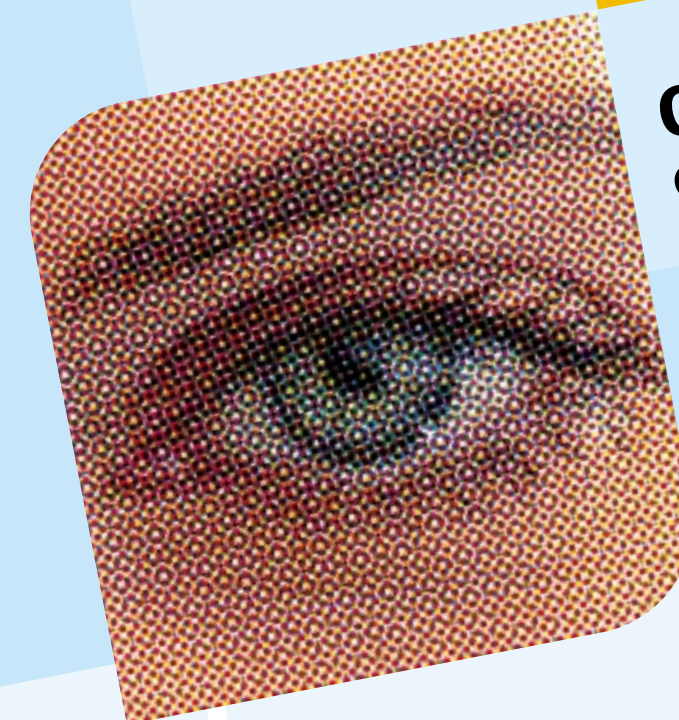
Produced using Creo technology



www.creo.com

Creo Inc. 3700 Gilmore Way Burnaby, British Columbia Canada V5G 4M1 T. +1.604.451.2700 F. +1.604.437.9891	Creo Americas, Inc. Eight Oak Park Drive Bedford MA 01730 USA T. +1.781.275.5150 F. +1.781.275.3430	Creo Asia Pacific Ltd. 3/F, 625 King's Road North Point Hong Kong T. +852.2882.1011 F. +852.2881.8897	Creo Europe, S.A. Waterloo Office Park Drewe Richele 161 B-1410 Waterloo, Belgium T. +32.2.352.2511 F. +32.2.351.0915	Creo IL Ltd. P.O. Box 330 Herzlia Industrial Park 46103 Herzlia Israel T. +972.9.959.7222 F. +972.9.950.2922	Creo Middle East/Africa P.O. Box 330 Herzlia Industrial Park 46103 Herzlia B, Israel T. +972.9.959.7585 F. +972.9.959.7787	Creo Japan Inc. Ikebukuro TG Homest Bldg 1-17-8, Higashi-Ikebukuro Toshima-ku, Tokyo, 170-0013, Japan T. +81.3.5954.9050 F. +81.3.5954.9055
---	---	---	--	---	---	--

Catalog No. 75-0735A



oXYgen DOT Solution Top copydot scanning performance for flatbed scanners

- oXYgen DOT
- oXYgen DOT Toolkit



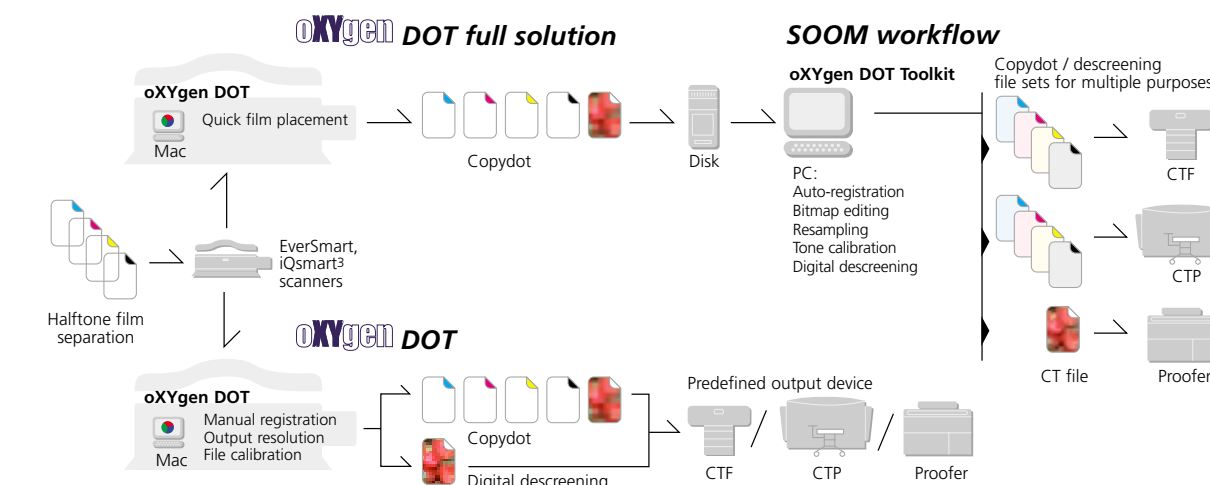
oXYgen DOT Solution unmatched excellence in copydot scanning

oXYgen DOT Solution enhances copydot scanning and digital descreening on premium EverSmart™ scanners and the new IQSmart™ scanner. From the same team that developed the Creo Renaissance copydot scanners, this professional copydot solution offers unmatched quality, flexible workflow, and extended functionality for professional color scanners.

A solution for all copydot scanning needs
 The oXYgen DOT Solution consists of two components: oXYgen DOT and oXYgen DOT Toolkit. Each

contributes to the outstanding performance of this product. oXYgen DOT includes high quality copydot scanning, a new tone calibration, and digital descreening.

oXYgen DOT Toolkit delivers powerful, automatic registration, advanced digital descreening, retouching tools for bitmap editing, and full Scan Once, Output Many (SOOM) workflow. (see diagram)



oXYgen DOT – top scanning performance

Creo Renaissance algorithms are incorporated in oXYgen DOT to assure superb image quality, while converting halftone film separations into high quality digital files. Each dot is copied precisely, retaining the original dot shape, screen ruling, screen angle, and resolution. As a result, the accuracy of tones and the quality of the original text and images are preserved.

Forget about moiré
 Renaissance image processing algorithms, reduce moiré and artifacts to the lowest levels of any multipurpose scanner. Your scanned images will satisfy even the most demanding requirements.

XY Stitch technology assures high reproduction quality
 Complemented by Creo's XY Stitch scanning technology, oXYgen DOT produces high quality digital files, with uniform sharpness and

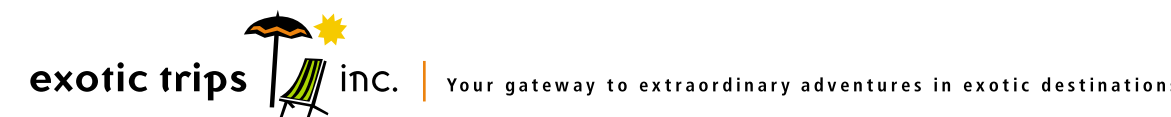
resolution across the entire scanning bed, up to A3+ / 13 x 18 inches.

Digital descreening produces contone files for multiple uses
 The digital descreening workflow in oXYgen DOT uses unique algorithms to digitally remove halftone screening information from the copydot file, while preserving the detail of the original film. Descreening allows you to resize the file, edit it and produce digital proofs without rescanning.

looking for an unforgettable adventure?

We're looking for a limited number of adventurers, to join us on a two-wheel trek off the beaten path. **During 21 days we'll explore remote, out-of-the-way places that are truly amazing and unbelievable!**

Interested? Then contact us at **1-800-EXOTRIP** or visit our website to learn more about our exciting trips www.exotic-trips.com



Digital Descreening:

Scanned file resolution: 300 dpi

Output screen ruling: 175 lpi

Original Films:

11 X 8.2 inch

280 X 210 mm

Original film screen: 175 lpi

oXYgen DOT Toolkit – powerful workflow functionalities

When you add oXYgen DOT Toolkit to oXYgen DOT you obtain the oXYgen DOT Solution. Running on a separate workstation, the Toolkit delivers an unmatched set of tools that automates and increases the flexibility of your copydot workflow. Moreover, you benefit from higher efficiency and productivity with parallel operation: while an operator scans an image on one computer (Macintosh®), another scanned image can be edited on the other (PC) by a more advanced operator.

Fully automatic registration shortens the production cycle
No need to spend time registering halftone film separations – just drop the film anywhere on the scanner bed and scan. Automatic registration electronically matches the separations perfectly without operator intervention.

SOOM controls the copydot process and boosts productivity
oXYgen DOT Solution provides a Scan Once, Output Many (SOOM) workflow allowing unlimited repurposing of copydot files. A copydot file scanned by oXYgen DOT can be repurposed to multiple devices, including imagesetters, platesetters and proofers. File sets can be created, each with the right format, resolution and tonal calibration to match any device or workflow

• **Resampling**
allows you to increase the pixel resolution of a copydot file, up to 4,000 dpi. This gives you the flexibility to scan once and deliver files with resolutions compatible with any selected output device.

• **Reformatting**
allows you to change the format, compression method and other file properties.

• **Tonal calibration curves**
compensate for the non-linear effects of digital halftone proofing media, to maximize the color-accuracy of halftone proofs. The

calibration also controls tonal density on the digital plate or compensates for dot gain resulting from film imaging.

• **Digital descreening increases the flexibility of your workflow**
Descreening in the oXYgen DOT Toolkit, allows you to take a copydot scan, ready for platesetter or imagesetter, and repurpose it as a contone for proofing or other application, without rescanning.

Bitmap editing cuts processing time by removing dust and defects from copydot files

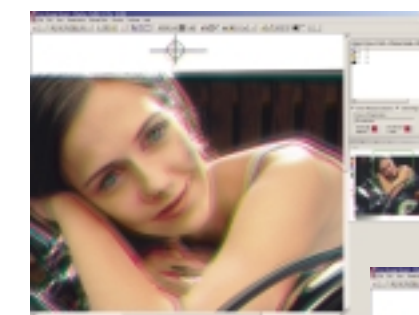
Through copydot retouching you can remove dust, scratches and other imperfections in the digital halftone image. These tools allow last-minute retouching before determining final destination of the files.

Powerful image viewer verifies quality before completing the process

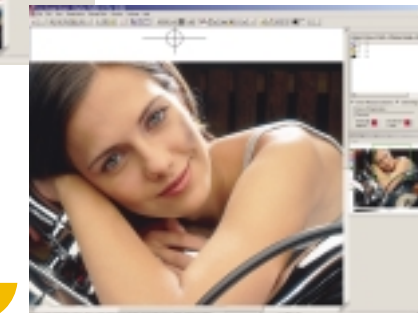
A digital halftone separation viewer enables you to check the image content and composition, and avoid potentially costly problems before going to press. Associated editing tools include tint measurement, screen angle and frequency measurement, and image orientation (rotate, mirror and invert).

Installing the oXYgen DOT application

The oXYgen DOT application is available separately, without the oXYgen DOT Toolkit, for customers who do not need the advanced functionalities of the full oXYgen DOT Solution. You can add the oXYgen DOT Toolkit later as an upgrade.



Before registration



After registration

oXYgen DOT solution – specification highlights

oXYgen DOT

General	
Prerequisites:	Minimum Mac System Requirements: Apple®Power Macintosh (G4) - 450MHz Mac® OS version 9.0 or higher 256 MB of available memory (RAM) for scanning application (not including memory for system software) 2GB internal hard disk; 24-bit color display, 17 in. monitor; SCSI
Scanning format	305 x 432 mm / 12 x 17 in. (up to A3 + bleeds) - EverSmart Select, EverSmart Supreme 330 x 457 mm / 13 x 18 in. - IQsmart ³
Registration (without Toolkit)	Built-in registration pin system; Special mounting template for easy manual registration
Copydot scanning	
Optical scanning resolution	2,540 dpi / 100 dpm
Output resolution	Maximum: 3,800 dpi / 150 dpm Minimum: 1,000 dpi / 40 dpm
Original screen ruling	60 lpi - 200 lpi
Number of separations	1 to 16
File formats	EPS: DCS2 with CITT 3 & 4, Scitex New LW, TIFF, LWHS
Output compensation	New tone calibration tools
Dust Filter	Adjustable dust filter for reducing dust and scratches
oXYgen DOT Toolkit mode	Scanning resolution 2,540 dpi / 100 dpm Copydot scans with trim for repurposing Linear output scan
Productivity (at 2540 dpi / 100 dpm)	5.2 min. (per separation), 24 min. (per job, including preview) - all scanners Test configurations: EPS file format not compressed, for one job (4 separations) size 210 x 297 mm / 8.5 x 11 in. using Macintosh G4, 733 MHz computer
Digital descreening	
Scanned file resolution	150 dpi - 600 dpi / 6 dpm - 24 dpm
Original screen ruling	60 lpi - 200 lpi
Number of separations	1 or 4 separations
Sharpness control	Sharpness control table
Enlargement	50% - 200%
File formats	EPS: DCS2 with JPG compression; TIFF, Scitex CT, JPEG
Output compensation	New tone calibration tools
Dust Filter	Adjustable dust filter for reducing dust and scratches
Productivity	2.25 min. per separation, 10 min. (per job, including preview) - all scanners Test configurations: Final scan time for 210 x 297 mm / 8.5 x 11 in. (A4 V) at 300 dpi, using Macintosh G4, 733 MHz computer

oXYgen DOT Toolkit

General	
Prerequisites:	Minimum PC System Requirements: • Intel Pentium II family processor (Pentium III or greater recommended) • 64 MB RAM (128 MB recommended); 1 GB free hard disk space • Windows NT 4.0 Service Pack 3 or greater or Windows 2000 • 1024x768 or higher resolution video display Network Configuration for use with oXYgen DOT: • CDDI, FDDI or 100base-T network: A 100 Mb network connection between the PC and the Mac • Interconnectivity solution for networking Windows and Macintosh workstations
Input	Copydot file sets from oXYgen DOT system
Output Options:	
Copydot File formats*	• TIFF (using G3, G4, LZW, or Packbits) • EPS (using G3 or G4) • PDF (using G3, G4, or ZIP / Flate) • TIFF-IT / LW-P1 with optional RGB or CMYK 72-150 dpi • TIFF preview • Scitex New LW and LWHS
Digital Descreening File Formats*	TIFF (uncompressed or compressed using Packbits) EPS (Photoshop-compatible uncompressed) PDF (uncompressed or compressed using JPEG, Packbits, ZIP) CTHS
Performance	
Test configurations	Copydot Toolkit for oXYgen DOT Pentium III - 500 Mhz with 512 MB RAM 100 MB, 100Base-T network, Mac and PC on the same hub All times are based on processing four-separation CMYK, A4 / 8 x 10 in. size film set, 2,540 dpi Copydot File Processing
File processing*	Auto-Registration - 04:47 min. Reformat - 02:30 min. Descreen - 02:50 min. Resample - 03:20 min. Calibrate** - 04:25 min.

* TIFF, EPS and PDF can be output either as separated files or composite files. **Times are dependent on image content, line screening, output resolution
**Includes reformatting

looking for an
unforgettable
adventure?

We're looking for a limited number of adventurers, to join us on a two-wheel trek off the beaten path. During 21 days we'll explore remote, out-of-the-way places that are truly amazing and unbelievable!

Interested? Then contact us at [1-800-EXOTRIP](tel:1-800-EXOTRIP) or visit our website to learn more about our exciting trips www.exotic-trips.com

looking for an
unforgettable
adventure?

We're looking for a limited number of adventurers, to join us on a two-wheel trek off the beaten path. During 21 days we'll explore remote, out-of-the-way places that are truly amazing and unbelievable!

Interested? Then contact us at [1-800-EXOTRIP](tel:1-800-EXOTRIP) or visit our website to learn more about our exciting trips www.exotic-trips.com